

# MOSTAQBAL

ENGINEERING AND ENVIRONMENTAL CONSULTANTS

COMPANY PROFILE



# CONTENTS

CHAIRMAN'S MESSAGE	5
OVERVIEW	6
EXPERTISE	8
SPECIALTIES	10
AREAS OF OPERATION	12



# CHAIRMAN'S MESSAGE



The world's economy is evolving at an unprecedented pace. High stakes and fierce competition have driven a business environment in which only the most resilient companies thrive and succeed.

We established our firm in 1978, recognizing the need for high-level, integrated engineering consultancy services. Over the years, MOSTAQBAL Engineering and Environmental Consultants has navigated severe market adversity, incorporating cutting-edge engineering advances, and setting high standards of excellence in project deliverables.

We engineer for a better future, with a firm commitment to creating projects that will continue to produce value for Clients and Society.

**Eng. Husni Abu Gheida**

Chairman of Board | Co-Founder





# OVERVIEW

## VISION

To be a leading regional architecture, engineering and environmental consulting firm

## MISSION

To provide top quality and added value consulting services by committing to new technologies and sustainability to satisfy our Clients and Stakeholders

## VALUES

Quality, sustainability, innovation, resilience, social responsibility and equality

MOSTAQBAL is a multi-disciplinary engineering consultancy firm that provides architectural, engineering, and environmental services. With an emphasis on quality, innovation, and design excellence, we build solid long-term relations with our Partners and Clients, fulfilling project objectives across a diverse range of industries.

MOSTAQBAL formerly known as 'Amman Consulting Engineering and Planning Office' (ACEPO) has gained Through the leadership of our co-founder, H.E. Husni Abu Gheida, over four decades of experience in employing the top expertise across the engineering industries, to provide high-level consulting solutions to our Clients in both public and private sectors.

Today, we have grown to become one of the country's most trusted engineering and environmental consultants. We are a closely-integrated team of engineers and consultants, utilizing the latest concepts and methods to deliver projects that resolve engineering challenges.



## CLASSIFICATION

- Class 1A by the Jordanian Ministry of Public Works and Housing in Buildings, Water, Wastewater, Roads and Environment.
- Classified by the Jordan Engineers Association in the following sectors: architecture, structural engineering, mechanical engineering, electrical engineering and power, surveying, urban planning, water and wastewater, roads, bridges, traffic, project management, environment, and renewable energy.
- Authorized Environmental Consultants and Auditors Accredited by the Jordanian Ministry of Environment.

## CERTIFICATIONS



ISO 9001:2015



ISO 14001:2015



OHSAS 45001:2018

## MEMBERSHIP

Jordan Engineers Association



Architecture / Engineering Business Council



Jordan Europe Business Association



Jordan Green Building Council



Federation of Consultants from Islamic Countries

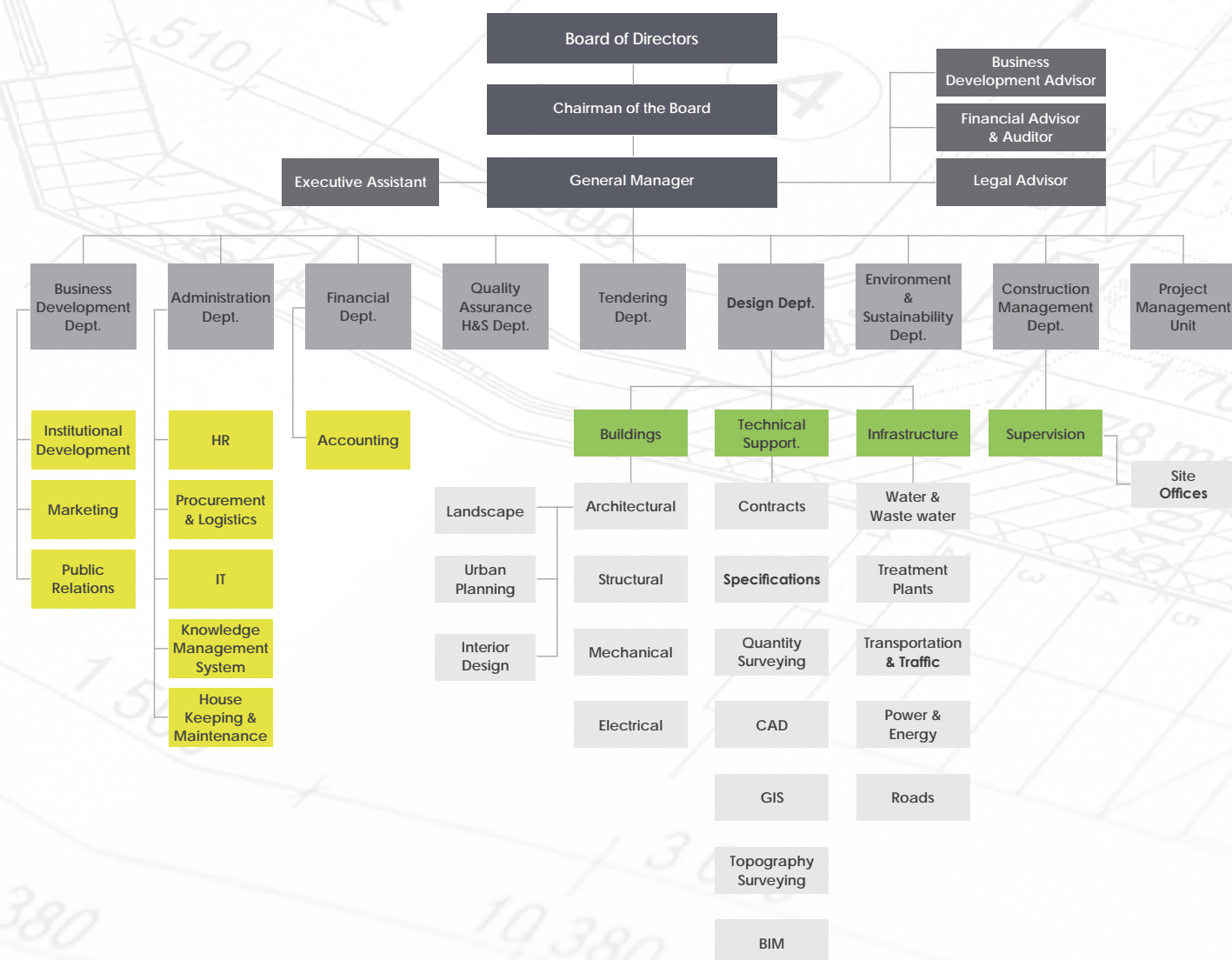




# EXPERTISE



## ORGANIZATION CHART



At the core of MOSTAQBAL's team there are more than 200 highly-qualified engineers and consultants. Each one is equipped with extensive technical experience, having conducted various surveys, researches, studies, and designs across a diverse range of challenging projects and disciplines, including architecture, urban and master planning, MEP engineering, building information modeling, construction management and supervision, project management, environmental studies, value engineering, and further engineering special studies.

Our team is further supported by a robust management structure of essential administration departments, including Quality Assurance/Quality Control, Information Technology, Human Resources, Finance, Legal, Tenders, Business Development, and Project Management Unit.

## OUR COMPETENCIES INCLUDE:

- Building and Landscape Architects Engineers and Consultants
- Structural Engineers and Consultants
- Electrical Engineers and Consultants
- Mechanical Engineers and Consultants
- Water & Wastewater Engineers and Consultants
- Environmental Engineers and Consultants
- Sustainability Engineers and Consultants
- Project Managers
- Supervision Engineers (All Disciplines)
- Infrastructure Engineers and Consultants
- Hydrology & Geotechnical Engineers and Consultants
- Quantity Surveyors
- Surveyors and Inspectors
- GIS Engineers and Consultants
- Building Information Modelling (BIM) Specialists
- CAD Specialists
- Feasibility Studies Specialists
- Value Engineering Specialists
- Urban Planners





# SPECIALTIES

## ARCHITECTURE

Architecture is more than a science: it's an art. At MOSTAQBAL, we understand the power of designs to give transform a space into a place, to enrich lives, generate opportunities, and to create lasting legacies that capture cultural traditions. With our comprehensive design service, we're able to deliver unique exterior design solutions, alongside a range of interior design features, while our design audit service provides our clients with essential input at an early stage in the project implementation. Conforming strictly to local and international engineering standard codes, we always strive to ensure that our outcomes adhere closely to our clients' needs.

## URBAN DEVELOPMENT

In MOSTAQBAL's long history, we have implemented a number of the most significant urban development projects in Jordan. We've developed several urban projects, collaborating with industry experts and local communities to build consensus, and to create dynamic long-term strategies that guide growth and future development. Above all, we're proven specialists in the technical aspects of land-use – from the broadest overview, down to the smallest detail.

## ENGINEERING

Our teams of engineers have a wide range of experience implementing projects from concept to completion, covering diverse industries, and including all engineering disciplines: structural, electrical, mechanical, industrial, environmental, and infrastructure. We've consistently applied our cumulative experience across Jordan, creating projects that continue to set new standards of excellence.

## BUILDING INFORMATION MODELLING

At MOSTAQBAL, we're always seeking out new and innovative technologies. Building Information Modelling (BIM) is becoming increasingly crucial in the world of architecture, engineering and construction projects, providing a virtual design and construction representation that facilitates greater levels of collaboration. With our team of Autodesk-authorized engineers, we're fully equipped to provide BIM services that augment the design process. We include pre-construction planning and analysis as part of our BIM service, optimizing each design to our Clients' needs. By combining our design and supervision experience with the technical knowledge of BIM technology and its applications, we are uniquely placed to fully utilize the benefits of BIM and its impact on the engineering industry.

## CONSTRUCTION MANAGEMENT AND SUPERVISION

Successful project delivery is only possible with well-managed and effective supervision. Our engineers consistently abide by the highest standards of site engineering guidance with respect to health and safety engineering measures, utilizing the depth of their expertise to satisfy project objectives. As a company, we give special consideration to practicality during the construction, delivering results of the highest quality, in line with specified deadlines and budgets.

## PROJECT MANAGEMENT

With more than four decades in the consultancy, we've developed distinguished solutions that suit every industry to deliver projects professionally. Facilitated by effective communication tools, our project management team combines extensive experience with a deep understanding of technical requirements, local and regional regulations, risk identification, followed by executing, monitoring, and controlling processes.

## ENVIRONMENTAL ENGINEERING

Environment is placed at the heart of our vision. We take into consideration our studies and historical records to provide specialized environmental studies covering the water, soil, air, waste management, green buildings standards, site evaluations and characterizations, geological and seismological studies, HSE and more. For each of our projects, we develop practical methodologies that comply with national and international related laws and regulations, including aspects such as Environmental and Social Impact Assessments (ESIA), designed to identify environmental and socio-economic implications, together with extensive quality assurance and monitoring procedures with special consideration to Gender.

## VALUE ENGINEERING

Our comprehensive value engineering services include a systematic and organized approach to project delivery. We focus on the functions of various components and materials to ensure suitability for project requirements, giving priority to elements that maximize economic efficiency, sustainability and quality. We promote the substitution of materials and methods with more cost-effective alternatives, without sacrificing functionality and quality.

## FEASIBILITY STUDIES

We have experience in delivering feasibility services for our Clients, drawing on our engineering expertise to develop project proposals for financial, technical and environmental feasibility. Our in-depth service encompasses design, production schedules, process flow sheeting, capital and operating costs estimates, and economic modeling, allowing us to identify and address potential issues to maximize time and budget efficiency.

## SPECIAL STUDIES

Over the years, we've developed to become a trusted partner of municipal and national governments, designing and supporting a range of major projects in the public sector. We've worked across diverse fields including roads, water, education, healthcare, and the environment, on such projects as the Amman Green City Action Plan (GCAP), and Jordan's Emergency Services and Social Resilience Project (ESSRP). Equipped with our extensive technical and engineering expertise, and our deep understanding of key design principles and industry standards, we enhance the delivery of essential projects that facilitate governance, and improve quality of lives.



# AREAS OF OPERATION

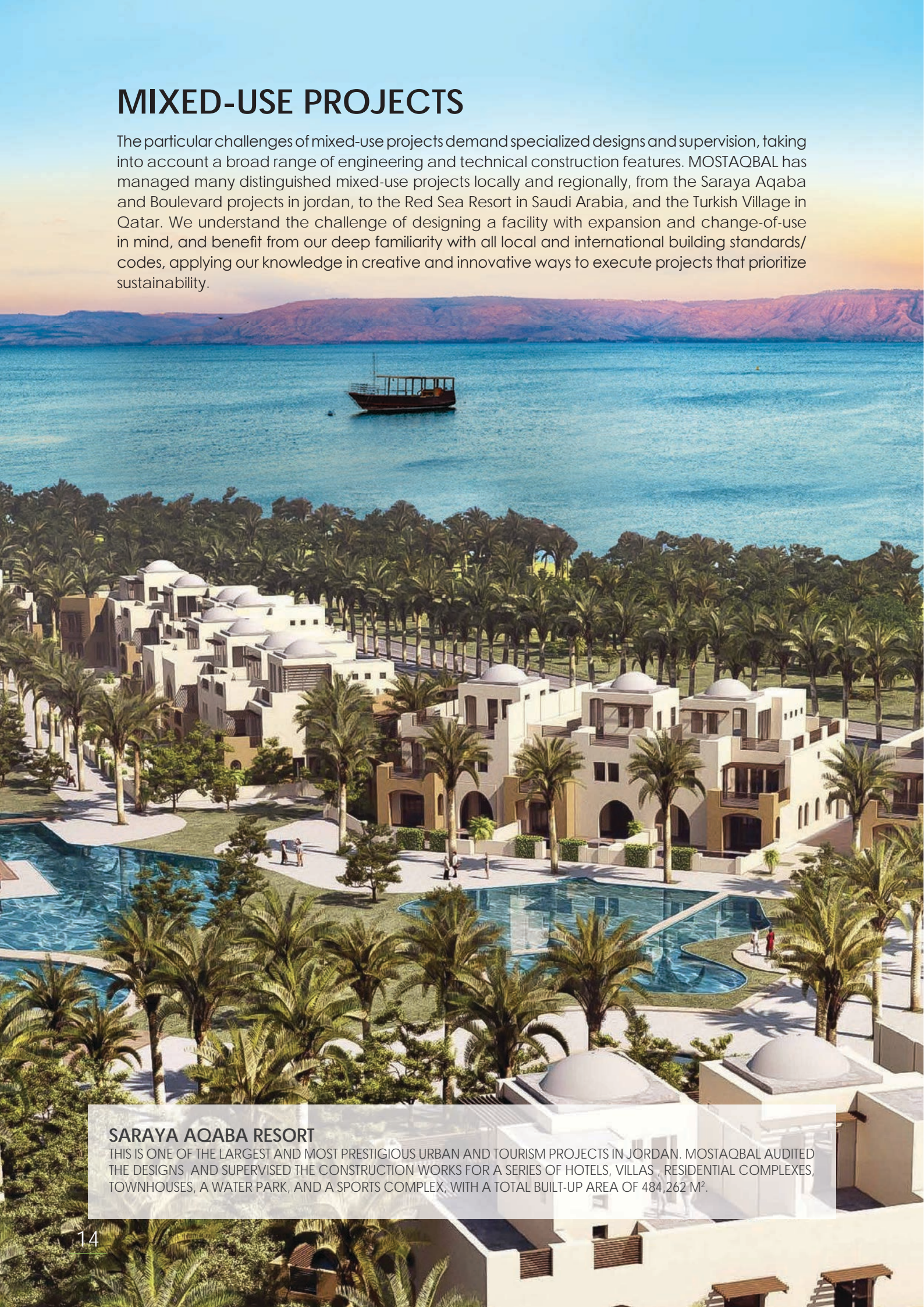
“ For over **45** years of experience, Mostaqbal provides comprehensive engineering services for a wide variety of strategic and challenging projects in the different sectors and business areas. ”





# MIXED-USE PROJECTS

The particular challenges of mixed-use projects demand specialized designs and supervision, taking into account a broad range of engineering and technical construction features. MOSTAQBAL has managed many distinguished mixed-use projects locally and regionally, from the Saraya Aqaba and Boulevard projects in Jordan, to the Red Sea Resort in Saudi Arabia, and the Turkish Village in Qatar. We understand the challenge of designing a facility with expansion and change-of-use in mind, and benefit from our deep familiarity with all local and international building standards/ codes, applying our knowledge in creative and innovative ways to execute projects that prioritize sustainability.



## SARAYA AQABA RESORT

THIS IS ONE OF THE LARGEST AND MOST PRESTIGIOUS URBAN AND TOURISM PROJECTS IN JORDAN. MOSTAQBAL AUDITED THE DESIGNS AND SUPERVISED THE CONSTRUCTION WORKS FOR A SERIES OF HOTELS, VILLAS , RESIDENTIAL COMPLEXES, TOWNHOUSES, A WATER PARK, AND A SPORTS COMPLEX, WITH A TOTAL BUILT-UP AREA OF 484,262 M².



## ABDALI BOULEVARD

ABDALI BOULEVARD PROJECT IN THE ABDALI DEVELOPMENT AREA IS A MODERN ICONIC COMPLEX IN AMMAN, MOSTAQBAL AUDITED THE DESIGNS FOR THE MAJOR PROJECT COMPONENTS, A LONG AND WIDE PEDESTRIAN SPINE CONNECTS THE MIXED-USE BUILDING BLOCKS, ALL INCLUDE THE COMMERCIAL USES OF GYMNASIUMS, SWIMMING POOLS, RESTAURANTS, HOTELS AND OFFICES.



## DEAD SEA CORNICHE

MOSTAQBAL SUPERVISED THE CONSTRUCTION OF THE VITAL CORNICHE IN THE DEAD SEA AREA, THIS PROJECT INCLUDED A WIDE RANGE OF HYDROLOGICAL AND ROADS ENGINEERING SERVICES AND OTHER IMPORTANT COMPONENTS TAKING INTO CONSIDERATION THE BEST UTILIZATION OF THE ROADS AND WATER DRAINAGE TO SUIT THE OBJECTIVES OF TOURISTIC FACILITATION.



## TURKISH VILLAGE - (QATAR)

MOSTAQBAL DESIGNED THE MASTER PLAN COVERING ALL THE ASPECTS OF URBAN DEVELOPMENT TO TOTAL OF 550,000 M² IN AL FROOSH AREA ALONG THE FESTIVAL ROAD AL DOHA QATAR, THE DEVELOPMENT WILL SERVE AS A MULTINATIONAL ENTITY WHICH COMPRISES SEVERAL COMPONENTS INCLUDING RESIDENTIAL BUILDINGS, COMMERCIAL BUILDINGS, TRADITIONAL MARKETS, ADMINISTRATION BUILDINGS, POLICE STATION, FIRE STATION, HEALTHCARE BUILDINGS, EDUCATIONAL BUILDINGS, RESORTS AND SPAS, FITNESS CENTRES, A MOSQUE AND PRAYER ROOMS, 5 BOUTIQUE HOTELS, CAR PARKING, LOGISTICS AREA AND UTILITY HUB / SERVICE COMPOUND: ELECTRICAL SUBSTATIONS, DISTRICT COOLING, WATER TANKS, TRADITIONAL TURKISH GARDENS, FOUNTAINS AND OPEN PLAZAS, OUTDOOR RECREATIONAL AREAS, AND CHILDREN FACILITIES (PLAY AREAS, NURSERY ETC.).



## JEDDAH SEA VILLAGE - (KSA)

A LUXURIOUS TOURISTIC PROJECT IN JEDDAH, KSA ON A LAND FEATURING AN AREA OF 65,000 M², ON THE SHORELINE OF THE RED SEA. MOSTAQBAL DESIGNED BUILDING ALONG WITH ALL RELEVANT DEVELOPMENT INFRASTRUCTURE COMPONENT OF VILLAS, RESIDENTIAL APARTMENTS, STAFF ACCOMMODATION BUILDING, MOSQUE, CLUB HOUSE AND YACHT CLUB.



## MAAN PARK

MA'AN PARK IS CONSIDERED ONE OF THE MOST IMPORTANT AND LARGEST PARKS AND GARDENS IN THE CITY OF MA'AN, WHICH IS DESIGNATED AS AN OUTLET FOR ALL FAMILIES IN MA'AN AND IS CHARACTERIZED BY GREEN SPACES AND TREES AND INCLUDES ENVIRONMENTAL AND RECREATIONAL PARTS IN ADDITION TO A CHILDREN'S PLAY AREA SURROUNDED BY NUMBERS OF TREES, PLANTS AND SEASONAL FLOWERS. MOSTAQBAL FULLY DESIGNED THE MASTER PLAN OF THE PROJECT APPLYING THE GREEN DESIGN STANDARDS.



## SARAYA WATER PARK

MOSTAQBAL REVIEWED THE DESIGN TO THE FIRST OF ITS KIND WATER PARK IN AQABA AND THE LARGEST TO OPEN IN THE KINGDOM OF JORDAN WITHIN SARAYA AQABA PROJECT TO MAXIMIZE COMFORT AND ENTERTAINMENT TO THE HIGHEST STANDARDS, AND TO PROVIDE NEW OPTIONS FOR THE RESIDENTS OF AQABA AND ITS VISITORS THROUGHOUT THE YEAR.



## DANA GUEST HOUSE

MOSTAQBAL SUPERVISED THE EXPANSION WORKS IN ACCORDANCE WITH WORKPLACE BEST PRACTICES, AND ALL ASPECTS OF QUALITY ASSURANCE. PARTICULAR CONSIDERATION WAS GIVEN TO THE NATURE OF THE SITE THAT PERCHED ON THE EDGE OF THE PRECIPITOUS CLIFFS OF WADI DANA, THIS BEAUTIFULLY STYLED BUILDING MERGES ELEMENTS OF VILLAGE VERNACULAR ARCHITECTURE WITH MORE MODERN ELEMENTS, CREATING A STRUCTURE WITH A DEFINABLE ARABIC CHARACTER, UNLIKE ANY OTHER IN JORDAN, OFFERING BREATHTAKING VIEWS OF THE RESERVE.. THE GUESTHOUSE IS ALSO EQUIPPED WITH FACILITIES FOR COURSES AND CONFERENCES, MAKING A PERFECT LOCATION FOR RETREATS AND WORKSHOPS.



## AL MA'WA SANCTUARY FOR NATURE AND WILDLIFE

MOSTAQBAL DESIGNED, MASTER PLANNED AND SUPERVISED THE CONSTRUCTION OF THE PROJECT, THE SANCTUARY PROJECT AIMS AT PROVIDING AN ENVIRONMENT SIMILAR TO THE ANIMALS' NATURAL HABITAT, AS WELL AS ATTRACTING LOCAL AND INTERNATIONAL TOURISTS BY PROVIDING ECO-LODGES FOR OVERNIGHT STAYS, A VISITOR CENTRE, AND A RESTAURANT.



## ABDALI NEW DOWNTOWN DEVELOPMENT

MOSTAQBAL SUPERVISED THE CONSTRUCTION OF THE PROJECT, WHERE CONSIDERED THE LARGEST MIXED-USE DEVELOPMENT PROJECT IN AMMAN, JORDAN IN TERMS OF ITS MAGNITUDE AND IMPACT ON THE VARIOUS SECTORS AND ACTIVITIES. THROUGH ITS COLLABORATION WITH RENOWNED MULTINATIONAL DEVELOPERS, IT HAS CREATED A HUB AND CITY CENTRE WHICH OFFERS THE HIGHEST LEVEL OF TECHNOLOGY AND A FOUNDATION FOR FUTURE BUSINESS AND INVESTMENT OPPORTUNITIES.



# HEALTHCARE FACILITIES

Quality healthcare engineering is about more than building design. It's about creating supportive environments that prioritize people's wellbeing and facilitate excellent care delivery. At MOSTAQBAL, we understand these requirements, building hospitals that put people at their heart. Our extensive track-record of designing and supervising healthcare projects across Jordan puts us firmly at the forefront of engineering consultancies in the field. With a particular focus on public hospitals, we engineer healthcare facilities with the future in mind, guaranteeing positive healthcare outcomes, while anticipating the challenges to come. We are proud to have recently been awarded the Ministry of Public Works and Housing best design award for our work on the Tafleh Governmental Hospital, which prioritized technical aspects including BIM and green buildings, demonstrating full conformity with local and international engineering standards.



## PRINCE HAMZEH HOSPITAL

MOSTAQBAL IMPLEMENTED DESIGN WORKS INCLUDING ALL ARCHITECTURAL, CIVIL, ELECTROMECHANICAL, LANDSCAPING AND MEDICAL PLANNING TO THE ONE OF LARGE GOVERNMENTAL HEALTHCARE FACILITY IN JORDAN WITH CAPACITY OF 500 BEDS SUBJECT TO FUTURE EXPANSION, IT IS CONSIDERED ONE OF THE IMPORTANT HEALTHCARE FACILITIES BASED ON SERVING THE CENTRAL REGION OF JORDAN.



## ZARQA HOSPITAL

MOSTAQBAL SCOPE OF WORK INCLUDED ARCHITECTURAL, MECHANICAL, ELECTRICAL, LANDSCAPING AND MEDICAL PLANNING TO THE HOSPITAL ALONG WITH ALL INFRASTRUCTURAL AND EXTERNAL WORKS TO THIS KEY PUBLIC HEALTHCARE FACILITY WITH EXPANDABLE CAPACITY OF 500 BEDS TO SERVE THE NORTHERN REGION OF JORDAN.



## AL TAFILEH HOSPITAL

MOSTAQBAL PREPARED THE ARCHITECTURAL AND ELECTROMECHANICAL STUDIES AND DESIGNS COMPONENTS INCLUDING MEDICAL EQUIPMENTS, EXTERNAL WORKS AND FULL SITE COORDINATION. ALL THIS FEATURES MOSTAQBAL TO WON THE JORDANIAN MINISTRY OF PUBLIC WORKS AND HOUSING AWARD ON BUILDING CATEGORY FOR BEST DESIGN 2018 UTILIZING BIM TECHNOLOGY AND ADOPTING THE GREEN BUILDING CONCEPTS ALL TO SUIT THE CHALLENGE OF SITE NATURE AND BUILDING COMPLEXITY.



## AL NADEEM HOSPITAL

MOSTAQBAL PREPARED THE STUDIES, DESIGNS AND TENDER DOCUMENTS INCLUDING ALL ARCHITECTURAL, ENGINEERING, BIOMEDICAL ENGINEERING, AND MEDICAL PLANNING, AS WELL AS LANDSCAPING, PARKS, AND EXTERNAL WORKS TO THE PROJECT OF HOSPITAL EXPANSION.



## BASHIR DENTAL HOSPITAL

MOSTAQBAL CONDUCTED COMPLETE DESIGNS, STUDIES AND TENDER DOCUMENTS PREPARATION INCLUDING ARCHITECTURAL, MECHANICAL, ELECTRICAL, LANDSCAPING, BIOMEDICAL ENGINEERING AND MEDICAL PLANNING TO THE EXPANDABLE 50 BEDS HOSPITAL BUILDING TO UPGRADE THE EFFICIENCY OF THIS HEALTHCARE FACILITY.



## AL YARMOUK GENERAL HOSPITAL

A KEY HOSPITAL IN IRBID-JORDAN TO SERVE THE NORTHERN REGION WITH EXPANDABLE CAPACITY OF 100 BEDS, MOSTAQBAL CONDUCTED STUDY, DESIGN AND TENDER DOCUMENTS PREPARATION INCLUDING MEDICAL PLANNING AND BIOMEDICAL ENGINEERING TO THE PROJECT.



## AL RAMTHA HOSPITAL

MOSTAQBAL CONDUCTED DESIGN & TENDER DOCUMENTS PREPARATION INCLUDING MEDICAL PLANNING AND BIOMEDICAL ENGINEERING AND SUPERVISED THE CONSTRUCTION OF HOSPITAL EXPANSION WHICH CONSISTS OF FIVE FLOORS AND A TOTAL AREA OF 12,000 M<sup>2</sup> WITH A CAPACITY OF 75 BEDS EXPANDABLE TO 150 BEDS, AND LINKING THE EXPANSION BUILDING TO THE EXISTING BUILDING.



## KING HUSSAIN MEDICAL CITY (DENTAL CENTRE)

MOSTAQBAL IMPLEMENTED PROGRAM, BRIEF, CONCEPTUAL AND SCHEMATIC DESIGN ON THREE DIFFERENT PHASES, THE DESIGN WORKS INCLUDED ARCHITECTURAL, ELECTRICAL, MECHANICAL SYSTEMS, INTERIOR, AND COMMUNICATION NETWORKS. ALL COMPONENTS WERE DESIGNED ACCORDING TO THE ENVIRONMENTAL REQUIREMENTS OF THE FACILITY.



## IMPROVING NORTHERN MEDICAL CENTERS

MOSTAQBAL PREPARED THE DESIGNS, STUDIES AND TENDERS DOCUMENTS TO THE PROJECT OF EXPANDING AND IMPROVING A GROUP OF MAJOR MEDICAL CENTERS IN THE JORDNIAN NORTHERN REGION (JERASH, IRBID, AJLOUN) KHUSHAIBEH MEDICAL CENTRE-JERASH / SOOF MEDICAL CENTRE-JERASH / SAKHRA MEDICAL CENTRE- AJLOUN / AL-TAIBEH MEDICAL CENTRE-IRBID.



# EDUCATIONAL FACILITIES

Educational facilities, conducive design solutions have the potential to shape the learning experience, allowing students to fully realize their capabilities. We've designed and supervised the construction, expansion, and renovation of many public schools in Jordan, including environmental, health, and safety monitoring and surveys. We pride ourselves on taking a comprehensive design approach to educational facilities, tackling the complex requirements of high-capacity venues, while maintaining rigorous attention to principles of accessible design.

## JORDAN SOUTHERN REGION PUBLIC SCHOOLS

NEW SCHOOLS BUILDINGS AND OUT BUILDINGS IN THE SOUTHERN REGION OF JORDAN SERVING MULTIPLE GOVERNORATES, THE PROJECT FUNDED BY SAUDI FUND FOR DEVELOPMENT, MOSTAQBAL PROVIDED DETAILED DESIGN OF ALL BUILDINGS ELEMENTS AND EXTERNAL WORKS BESIDE TENDER DOCUMENTS PREPARATION.



## AL ISRAA UNIVERSITY

A PROMINENT EDUCATIONAL EDIFICE IN AMMAN JORDAN WELL ENGINEERED TO UTILIZE THE FACILITY WITH THE BEST MODERN CAMPUS LIFE, MOSTAQBAL FULLY DESIGNED AND PREPARED TENDER DOCUMENTS OF ALL PROJECT COMPONENTS AND SUPERVISED THE CONSTRUCTION OF THE BUILDING.



## AMMAN BACCALAUREATE PRIVATE SCHOOLS

THE AMMAN BACCALAUREATE SCHOOL IS RECOGNIZED AS A LEADING PIONEER SCHOOL IN THE REGION FOR FOSTERING A STIMULATING LEARNING ENVIRONMENT BASED UPON THE INTERNATIONAL BACCALAUREATE PHILOSOPHY. MOSTAQBAL IMPLEMENTED FULL DESIGN, CONSTRUCTION SUPERVISION INCLUDING ASSOCIATED ELEMENTS WORKS AND INFRASTRUCTURE.



## JORDAN CENTRAL PROVINCE PUBLIC SCHOOLS

THE PROJECT IS A GROUP OF PUBLIC SCHOOLS IN THE CENTRAL REGION AT BALQA GOVERNORATE, THE PROJECT FUNDED BY KUWAITI FUND FOR DEVELOPMENT, MOSTAQBAL FULLY DESIGNED AND PREPARED TENDER DOCUMENTS.



## JORDAN PUBLIC SCHOOLS EXPANSION

THE PROJECT IS FUNDED BY THE UNITED STATES AGENCY FOR INTERNATIONAL DEVELOPMENT TO SUPPORT THE JORDANIAN MINISTRY OF EDUCATION EFFORTS IN ENHANCING SCHOOLS LEARNING ENVIRONMENT AND TO INCREASE THE ACCESS TO SCHOOLS, THE PROJECT AIMED TO SURVEY 20 SCHOOLS AND PROPOSE EXPANSION PLANS AND SPACE PROGRAMS TO ACCOMMODATE SYRIAN REFUGEE'S STUDENTS AND TO DECREASE SCHOOLS OVERCROWDING.



## MAFRAQ PUBLIC SCHOOLS ( ERFKE II )

"EDUCATION REFORM FOR KNOWLEDGE ECONOMY" IS A MULTI-DONOR PROGRAM DESIGNED TO DELIVER NEW VISION FOR THE FUTURE OF EDUCATION IN JORDAN, AS A PART OF THE PROGRAM MOSTAQBAL STUDIED, DESIGNED, AND PREPARED THE TENDER DOCUMENTS AS WELL AS THE ENVIRONMENTAL IMPACT ASSESSMENT STUDY ALONG WITH SITE AND EXTERNAL WORKS TO A NEW PUBLIC SCHOOLS IN MAFRAQ - JORDAN.



## IRBID AND BALQA PUBLIC SCHOOLS

MOSTAQBAL DESIGNED AND PREPARED THE TENDERS DOCUMENTS AND SUPERVISED THE CONSTRUCTION TO THE COUPLE OF SCHOOLS PACKAGES ALL IMPLEMENTED IN PARALLEL FULFILLING THE PROJECT CHALLENGES AND NEEDS.



## MAFRAQ AND MADABA PUBLIC SCHOOLS

MOSTAQBAL DESIGNED AND PREPARED THE TENDER DOCUMENTS TO THE PROJECT OF TWO PUBLIC SCHOOLS EXPANSION AT MADABA AND MAFRAQ GOVERNORATES.



## JORDAN SCHOOLS EXPANSION PROJECT (JSEP)

THE PROJECT IS A PART OF USAID ENDEAVORS TO SUPPORT THE JORDANIAN MINISTRY OF EDUCATION TO REDUCE THE OVERCROWDING IN PUBLIC SCHOOLS, REPLACE RENTED AND DOUBLE SHIFTED SCHOOLS AND PROVIDE A SAFE AND MORE SUITABLE SCHOOL ENVIRONMENT FOR STUDENTS. MOSTAQBAL SUPERVISED THE CONSTRUCTION INCLUDING EXPANSION AND REHABILITATION OF 36 SCHOOLS AND KINDERGARTENS SPREAD OVER 4 PACKAGES IN AMMAN, MAFRAQ, BALQA AND MADABA GOVERNORATES WITH A TOTAL BUILT UP AREA OF 34,096 M<sup>2</sup>.



## LEARNING ENVIRONMENT IMPROVED INFRASTRUCTURE PROJECT (LEIIP)

THE PROJECT IS TO SUPERVISE THE CONSTRUCTION RENOVATION OF 100 SCHOOLS IN VARIOUS JORDANIAN GOVERNORATES (IRBID, JERASH, AQABA, MA'AN, TAFELIEH AND BALQA'A) OVER TWO PHASES, AIMING AT IMPROVING CIRCULATION, SANITARY FACILITIES, MEP SYSTEMS, ENHANCING SCHOOL IMAGE, HANDICAP ACCESSIBILITY AND KEY LEARNING ENVIRONMENT FUNCTIONS.



# PRIVATE & PUBLIC FACILITIES

Whether residential, commercial or public facilities, MOSTAQBAL's team of engineers and consultants has been responsible for the implementation of a wide range of building projects throughout the company's history. Our expertise covers all manner of engineering aspects, from traditional building design to the latest sustainability and green building standards. Our mission is always to achieve flexible and creative designs that prioritize people's lives.



**CARREFOUR COMMERCIAL FACILITY**  
MOSTAQBAL DELIVERED THE DESIGN AND CONSTRUCTION SUPERVISION TO CARREFOUR HYPERMARKET AT SOUQ BAB AL-MADINA MALL / ZARQA JORDAN, WHICH INCLUDES CIVIL WORKS, ARCHITECTURAL AND FINISHING WORKS, ELECTRO-MECHANICAL AND PLUMBING WORKS AND TESTING, OPERATION AND COMMISSIONING, THE PROJECT CONSISTS OF FOUR FLOORS WITH TOTAL AREA OF 7788 M<sup>2</sup>.



**CUSTOMS DIRECTORATE FACILITY**  
THIS PUBLIC FACILITY IS TO SERVE AS ONE OF THE CHECK POINTS ALONG THE INTERNATIONAL ROUTE OF CARGO TRUCKS, ENSURING SAFE AND LEGAL TRANSIT OF GOODS BESIDE FIGHTING THE SMUGGLING. MOSTAQBAL DELIVERED SITE MASTER PLANNING, HYDROLOGICAL STUDY AND DRAINAGE OF SURFACE AND STORM WATER, DESIGN AND TENDER DOCUMENTS PREPARATION OF ALL PROJECT COMPONENTS.



**JORDAN ISLAMIC BANK BRANCHES**  
THE PROJECT IS TO FULLY DESIGN AND SUPERVISE THE CONSTRUCTION BESIDE PREPARING THE TENDER DOCUMENTS TO A NUMBER OF BRANCHES TO JORDAN ISLAMIC BANK AT COMMERCIAL BUILDING AT ABDALI, AMMAN, BAGHDAD STREET BRANCH, IRBID (FIT-OUT), BAYADER BRANCH, AMMAN(FIT-OUT), AL-KARAK BRANCH, MADABA BRANCH (FIT-OUT).



**MCDONALD'S RESTAURANTS**  
THE PROJECT IS TO DESIGN AND PREPARE THE TENDER DOCUMENTS BESIDE SUPERVISE THE CONSTRUCTION OF NEW MCDONALD'S BRANCHES AND EXPANSION TO OTHER 11 BRANCHES (OVER 2 STAGES) WITH VARIOUS BUILT UP AREAS.



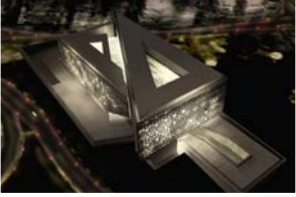
**BURGER KING RESTAURANTS**  
THE PROJECT IS TO FULLY DESIGN AND PREPARE THE TENDER DOCUMENTS OF THREE BURGER KINGS BRANCHES LOCATED IN VARIOUS LOCATIONS IN JORDAN WITH DIFFERENT TOTAL BUILT UP AREAS. THE WORKS INCLUDED ALL ARCHITECTURAL, STRUCTURAL, ELECTRICAL AND MECHANICAL WORKS AS WELL AS DECORATION IN ADDITION TO THE EXTERNAL WORKS, WATER SUPPLY AND WASTE DISPOSAL.



**RABWET SANA'A RESIDENTIAL COMPLEX (YEMEN)**  
AL FAISALIEH DEVELOPMENT PROJECT IS LOCATED ON A PLOT OF 250,000 M<sup>2</sup> AREA, AT THE CITY OF SANAA - YEMEN. THE DEVELOPMENT CONSISTS OF SEVERAL MODELS OF VARIOUS RESIDENTIAL, COMMERCIAL AND PUBLIC SERVICES BUILDINGS WITH A TOTAL BUILT UP AREA OF 220,000 M<sup>2</sup> AS RESIDENTIAL COMPLEXES, VILLAS, PALACES, PUBLIC SERVICES BUILDINGS, COMMERCIAL CENTER, OFFICES AND PRIMARY SCHOOL AND NURSERY, MOSTAQBAL IMPLEMENTED STRUCTURAL, MECHANICAL AND ELECTRICAL DESIGN OF THE BUILDINGS.



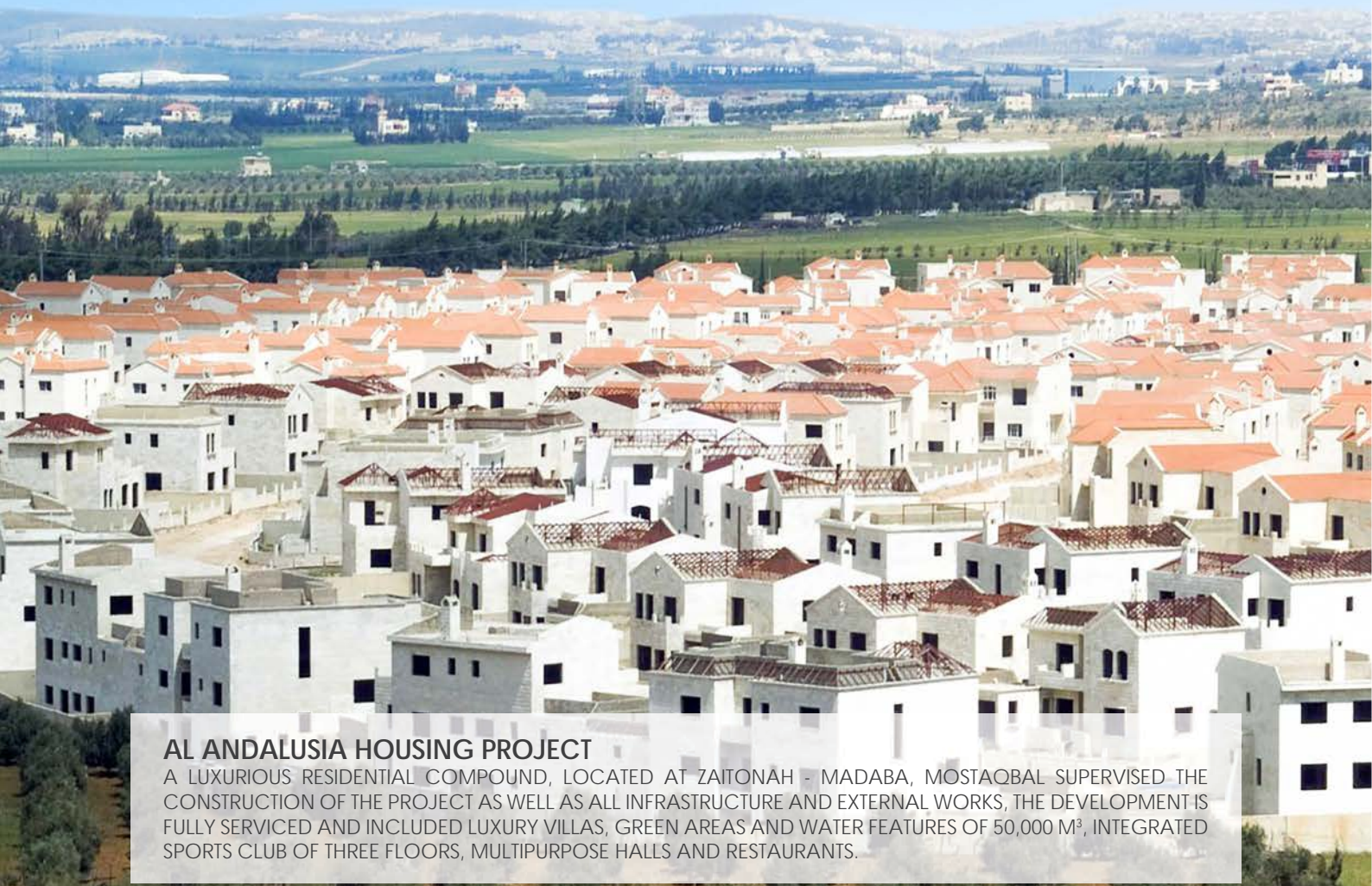
**ZARQA ECOLOGICAL GARDEN**  
AN ENVIRONMENTAL PARK IN RUSAIFEH, ON A PLOT OF 74,500 M<sup>2</sup> AREA. THE PROJECT COMPRISES OF ADMINISTRATIVE, ACTIVITIES' AND SERVICES BUILDINGS OF 1,770 M<sup>2</sup> BUILT UP AREA, PARKING LOTS AND PAVED YARDS, AMPHITHEATER, FOOTBALL AND BASKETBALL PLAYGROUNDS, ALL ASSOCIATED LANDSCAPE WORKS INCLUDING GARDENS AND FOUNTAINS, AS WELL AS ALL EXTERNAL WORKS INCLUDING GATES, FENCES, GABION WALLS, AND TANKS. MOSTAQBAL IMPLEMENTED ARCHITECTURAL SITE MASTER PLANNING DESIGN AND TENDER DOCUMENTS PREPARATION.



**HIGH JUDICIARY INSTITUTE**  
MOSTAQBAL FULLY DESIGNED AND PREPARED THE TENDER DOCUMENTS OF THE PROJECT INCLUDING THE EXTERNAL WORKS, THE HIGH JUDICIARY INSTITUTE BUILDING CONSISTS OF 3 BASEMENTS AND 4 FLOORS WITH TOTAL BUILT UP AREA OF 16,322 M<sup>2</sup>.



**ABUL-HAJ COMMERCIAL COMPLEX**  
THE COMMERCIAL BUILDING CONSISTS OF 12 FLOORS WITH A TOTAL BUILT-UP AREA OF 35,000 M<sup>2</sup>, THE BUILDING INCLUDES RETAIL SHOPS, STORES, OFFICES FLOORS, AND CAR PARKING. MOSTAQBAL DESIGNED, PREPARED TENDER DOCUMENTS, AND SUPERVISED THE CONSTRUCTION OF THE PROJECT.



**AL ANDALUSIA HOUSING PROJECT**  
A LUXURIOUS RESIDENTIAL COMPOUND, LOCATED AT ZAITONAH - MADABA, MOSTAQBAL SUPERVISED THE CONSTRUCTION OF THE PROJECT AS WELL AS ALL INFRASTRUCTURE AND EXTERNAL WORKS, THE DEVELOPMENT IS FULLY SERVICED AND INCLUDED LUXURY VILLAS, GREEN AREAS AND WATER FEATURES OF 50,000 M<sup>3</sup>, INTEGRATED SPORTS CLUB OF THREE FLOORS, MULTIPURPOSE HALLS AND RESTAURANTS.



# INDUSTRIAL COMPLEXES AND FACILITIES

Many of the industrial cities in Jordan have been designed and supervised by MOSTAQBAL, optimizing the use of space and infrastructure, taking into account the best technical practices to secure investment opportunities for the industrial sector. We aim to meet the specialized requirements and standards of each industry, employing the best technical practices to guarantee the resilience and efficiency of our Clients' facilities.



## AL MAFRAQ INDUSTRIAL ESTATE

AL MAFRAQ INDUSTRIAL ESTATE IS LOCATED AT A DISTANCE OF 10 KM EAST OF AL-MAFRAQ CITY ON A PLOT OF 2,250,000 M<sup>2</sup> AREA. WORKS INCLUDED SITE MASTER PLAN DESIGN - DESIGN AND TENDER DOCUMENTS PREPARATION OF ALL PROJECT COMPONENTS.



## AL KARAK INDUSTRIAL ESTATE

AL-KARAK INDUSTRIAL ESTATE AT A DISTANCE OF 19 KM TO THE EAST OF AL KARAK CITY ON A LAND OF 1,850,000 M<sup>2</sup> AREA. WORKS INCLUDED STUDY, DESIGN AND TENDER DOCUMENTS PREPARATION AND CONSTRUCTION SUPERVISION.



## AQABA INDUSTRIAL ESTATE

AQABA INDUSTRIAL ESTATE, LOCATED 10 KM FROM AQABA CITY, 700 M EAST TO AL-HUSSEIN BIN TALAL AIRPORT ON A PLOT OF 1,200,000 M<sup>2</sup> WITHIN THE AQABA SPECIAL ECONOMIC ZONE (ASEZ). WORKS INCLUDED SITE PLANNING, EXTERNAL AND INFRASTRUCTURE COMPONENTS PREPARATION OF THE TRAFFIC STUDY, MASTER PLAN DETAILED DESIGN, DESIGN AND TENDER DOCUMENTS PREPARATION OF ALL PROJECT'S COMPONENTS.



## KADDB INDUSTRIAL COMPLEX

THE PROJECT IS LOCATED AT AL-KHALIDEYE/ MAFRAQ GOVERNORATE ON LAND PLOT NO. 565 BASIN (6) WITH 93,000 M<sup>2</sup> PLOT AREA. MOSTAQBAL IMPLEMENTED DESIGN, TENDER DOCUMENTS PREPARATION OF ALL PROJECT ELEMENTS AND CONSTRUCTION SUPERVISION OF BUILDINGS WITH 25,000 M<sup>2</sup> BUILT UP AREA.



## JORDAN AIRCRAFT MAINTENANCE HANGER

AIRCRAFT MAINTENANCE STEEL STRUCTURE HANGERS CONSISTING OF DOUBLE HALL FOR TWO PLANES WITH SPANS OF 75 M EACH, WITH A TOTAL BUILT UP AREA OF 18,000 M<sup>2</sup>. THE WORKS INCLUDED THE AIRPLANE PORT AS WELL AS THE CORRIDOR CONNECTING THE PORT TO THE TAXIWAY, IN ADDITION TO THE EXTERNAL AND INFRASTRUCTURE WORKS. MOSTAQBAL DELIVERED THE PROJECT IN COORDINATION WITH THE CLIENT, OTHER CONSULTANTS AND LOCAL AUTHORITIES, SITE SURVEYING, STUDIES, DESIGN, AND TENDER DOCUMENTS PREPARATION AND CONSTRUCTION SUPERVISION.



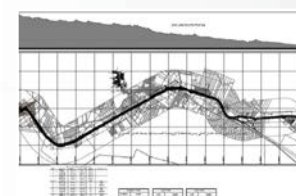
## JIFCO INDUSTRIAL FACILITY

MOSTAQBAL SUPERVISED THE CONSTRUCTION OF JORDAN INDIA FERTILIZER COMPANY (JIFCO) INDUSTRIAL FACILITY INCLUDING TWO PLANTS: SULFURIC-ACID PLANT AND PHOSPHORIC-ACID PLANT WITH ASSOCIATED UTILITIES AND OFFSITE FACILITIES, LOCATED IN ESHIDIYEH AREA AT ABOUT 80 KM SOUTH EAST OF MA'AN.



## NEW PORT AREA HANGERS

THE PROJECT IS LOCATED AT THE NEW PORT SOUTHERN AQABA, AND INCLUDES ASSESSING THE STATUS OF THE DEMOLISHED HANGERS AND REUSING AS APPLICABLE IN CONSTRUCTING NEW 8 HANGERS EACH INCLUDING ADMIN OFFICES AND SERVICES. THE HANGERS WILL BE CONSTRUCTED ON ASPHALT YARDS, AND WILL BE CONNECTED TO ALL SERVICES. MOSTAQBAL ASSESSED, STUDIED THE EXISTING STEEL STRUCTURE, DESIGNED AND PREPARED THE TENDER DOCUMENTS OF THE PROJECT.



## AL RAWDA GAS NETWORK - MA'AN

AL-RAWDA INDUSTRIAL AREA IS LOCATED NEAR AL-JAFER, ABOUT 10 KM TO THE SOUTHEAST OF MA'AN. THE PROJECT OBJECTIVE IS TO LINK THE INDUSTRIAL CAMPUS WITHIN THE MA'AN DEVELOPMENT AREA THROUGH THE ARAB GAS LINE PROJECT VIA GAS LINE OF 17 KM LENGTH AIMING AT CONTRIBUTING TO THE PROVISION OF INTEGRATED INFRASTRUCTURE. MOSTAQBAL PROVIDED STUDIES, DESIGNS AND TENDER DOCUMENTS PREPARATION.



## SALT INDUSTRIAL ESTATE

THE PROJECT AIMS TO DIVIDE 470,000 M<sup>2</sup> PLOT INTO A MINIMUM OF 5,000 M<sup>2</sup> INDUSTRIAL AREA EACH. INCLUDES ROAD NETWORKS, INFRASTRUCTURE OF WATER, SEWAGE, ELECTRICITY, COMMUNICATIONS, FIREFIGHTING AND A TREATMENT PLANT. BESIDE BUILDINGS AND EXTERNAL WORKS, MOSTAQBAL PROVIDED SITE MASTER PLAN, STUDIES, DESIGNS AND TENDER DOCUMENTS PREPARATION TO ALL PROJECT COMPONENTS.

## AL TAFILEH INDUSTRIAL ESTATE

THE PROJECT IS LOCATED 18 KM TO THE EAST FROM THE CENTER OF AL TAFILEH CITY. THE WORK INCLUDED SITE MASTER PLAN DESIGN OF 1,000,000 M<sup>2</sup> AREA AND ITS COMPONENTS - DESIGN OF THE ENTIRE PROJECT SITE AND TENDER DOCUMENTS PREPARATION OF ALL PROJECT ELEMENTS - CONSTRUCTION SUPERVISION OF PHASE (1) WHICH COVERS 500,000 M<sup>2</sup> OF THE TOTAL AREA OF PLOTS (25, 26, 37) OF BASIN (91) QAFIFIH.



# ENVIRONMENT & WASTE MANAGEMENT

We are experts in carrying out projects that preserve nature, protect resources, and manage waste. Across all our work, we utilize our in-depth knowledge of Environmental and Social Impact Assessments (ESIA), quality assurance and monitoring procedures. As a company, we have been trusted with the development of the national strategy for solid waste management in Jordan.

## DEVELOPING THE NATIONAL STRATEGY OF MUNICIPAL SOLID WASTE MANAGEMENT IN JORDAN

THIS PROJECT IS PART OF THE REGIONAL AND LOCAL DEVELOPMENT PROGRAM (JO-RLDP) THAT IS FUNDED BY THE WORLD BANK FOR RECONSTRUCTION AND DEVELOPMENT WHERE MOSTAQBAL ROLE AIMS AT CREATING A NATIONAL STRATEGY FOR THE MUNICIPAL SOLID WASTE MANAGEMENT (MSWM) SECTOR IN JORDAN BY STUDYING AND EVALUATING THE CURRENT LEGAL, INSTITUTIONAL, ECONOMICAL, FINANCIAL AND SOCIAL SITUATION, AND FORMULATING A STRATEGY FOR THE MSWM SUITABLE FOR JORDAN, WHICH WILL SERVE AS A ROAD MAP FOR THIS SECTOR.



## AMMAN STRATEGIC RESERVE TERMINAL FOR PETROLEUM PRODUCTS

MOSTAQBAL IMPLEMENTED FULL ENVIRONMENTAL IMPACT ASSESSMENT (EIA) TO THE PROJECT THAT AIMS AT SECURING SUFFICIENT STRATEGIC RESERVE OF PETROLEUM PRODUCTS LOCATED AT MADHOUNAH AREA, 25 KM EAST OF AMMAN. THE TOTAL NET-WORKING STORAGE CAPACITY OF THE TERMINAL IS 372,000 M<sup>3</sup> OF PETROLEUM PRODUCTS, ALONG WITH THE TOTAL NOMINAL LPG STORAGE CAPACITIES OF 18,800 M<sup>3</sup>.



## ASSESSMENT OF SUSTAINABLE LEAD ACID BATTERY COLLECTION AND RECYCLING SCHEME

MOSTAQBAL CONDUCTED ENVIRONMENTAL AND SOCIAL IMPACT STUDY (ESIA) BESIDE WASTE MAPPING, TECHNICAL, FINANCIAL AND LEGISLATIVE ANALYSIS TO ASSESS THE COLLECTION AND RECYCLING VIABILITY SCHEME OF USED LEAD ACID BATTERIES (ULAB) IN THE JORDANIAN CONTEXT, AND RECOMMENDING REQUIRED MEASURES OF DEVELOPING ENVIRONMENTAL AND ECONOMICAL SCHEME SPECIFIC TO THE COUNTRY IN LINE WITH INTERNATIONAL BEST PRACTICES.



## BIRDS OBSERVATORY RESERVE

MOSTAQBAL PREPARED THE STUDIES, DESIGNS, AND PREPARED THE TENDER DOCUMENTS BESIDE FULL ESIA TO THE PROJECT WITH A TOTAL AREA OF (255000 M<sup>2</sup>). THIS ECOLOGICAL RESERVE ATTRACTS A VARIETY OF MIGRATORY BIRDS WHILE CROSSING THE SKY OF AQABA DURING ITS MIGRATION TO EUROPE, ASIA AND AFRICA. THE EMBODIMENT OF A PIONEERING ENVIRONMENTAL IDEA IS THROUGH THE USE OF WATER BODIES FORMED FROM WASTEWATER TREATMENT PRODUCTS AS AN ATTRACTIVE ENVIRONMENT FOR BIRDS. IN ORDER TO ENSURE THE SUSTAINABILITY OF THE ENVIRONMENTAL AND TOURISM IMPORTANCE OF THE OBSERVATORY, IT WILL BE DEVELOPED INTO AN ECOLOGICAL PARK THAT PROMOTES THE ENVIRONMENTAL AND TOURISM REALITY IN THE AQABA AREA.



## DAIR-ALLA LANDFILL

THE PROJECT AIMS AT SELECTING THE BEST AND MOST APPROPRIATE OPTIONS FOR DEVELOPING THE CURRENT OPERATING MUNICIPAL SOLID WASTE LANDFILL AT DAIR-ALLA AS WELL AS EVALUATING THE ENVIRONMENTAL IMPACT OF THE CURRENT AND PROPOSED WASTE COLLECTION LANDFILL BY CONDUCTING ENVIRONMENTAL IMPACT ASSESSMENT AND FEASIBILITY STUDY.



## EMERGENCY SERVICES AND SOCIAL RESILIENCE PROJECT (ESSRP)

MOSTAQBAL MANAGED THE PROJECT AIMING AT HELPING JORDANIAN MUNICIPALITIES AND HOST COMMUNITIES TO ADDRESS THE IMMEDIATE SERVICE DELIVERY IMPACTS OF SYRIAN REFUGEE INFLOWS AND STRENGTHEN MUNICIPAL CAPACITY TO SUPPORT LOCAL ECONOMIC DEVELOPMENT, AIMING SPECIFICALLY TO ASSIST GOVERNMENT OF JORDAN TO RESPOND RAPIDLY TO THE PRESSING SERVICE DELIVERY AND SOCIOECONOMIC NEEDS OF THE AFFECTED HOST COMMUNITIES, AND STRENGTHEN INSTITUTIONAL CAPACITIES AND COMMUNITY COPING MECHANISMS TO ADDRESS SIMILAR CRISES IN THE FUTURE.



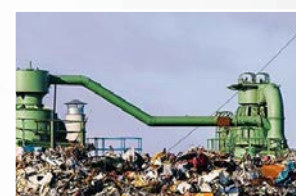
## EURO-MEDITERRANEAN LOGISTIC AREA OF AMMAN (MADOUNAH)

MOSTAQBAL CONDUCTED ENVIRONMENTAL AND SOCIAL IMPACT ASSESSMENT (ESIA) TO THE PROJECT MADOUNAH LOGISTIC AREA IN AMMAN AS ONE OF THE EURO-MEDITERRANEAN LOGISTIC PLATFORMS THAT AIMS AT DETERMINING THE TECHNICAL FEASIBILITY, ECONOMICAL/FINANCIAL VIABILITY AND ENVIRONMENTAL SOCIAL SUSTAINABILITY OF THE LOGISTICS AREA COMPONENTS OF AMMAN DRY PORTS AND THE LOGISTICS CENTER.



## GREATER AMMAN MUNICIPALITY SOLID WASTE MANAGEMENT PROJECT

THE PROJECT AIMED AT DESCRIBING AND EVALUATING A NUMBER OF CONCEPTS AND TO RECOMMEND WHAT COULD BE THE BASIS FOR FUTURE SOLID WASTE MANAGEMENT WITHIN GREATER AMMAN MUNICIPALITY (GAM) IN CONSIDERATION OF ENVIRONMENTAL ADVANTAGES INCLUDING GREENHOUSE GASES REDUCTION AND RESOURCES RECOVERY, AFFORDABILITY AND JOB CREATION. MOSTAQBAL CONDUCTED ANALYTICAL SURVEYS AND DEVELOPED STUDY REPORTS INCLUDING THE EVALUATING OF CURRENT SWM SYSTEMS TO DEVELOP NEW INTEGRATED SWM SYSTEM AND IMPLEMENTING ESIA.



## NORTHERN SHOUNEH SOLID WASTE MANAGEMENT PROJECT

MOSTAQBAL CONDUCTED A FULL ESIA TO THE PROJECT "MUNICIPAL SOLID WASTE SORTING CENTER AND TRANSFER STATION" THAT WILL BE CONSTRUCTED AND OPERATED TO SERVE THE COMMUNITIES OF THREE DESIGNATED MUNICIPALITIES. REDUCING THE COST OF WASTE COLLECTION AND TRANSPORTATION BY 20% FOR THE MUNICIPALITIES. THIS TRANSFER STATION WILL EMPOWER VULNERABLE WOMEN OF THE REGION WHO WILL BE OPERATING THE STATION, UNDER AN IMPLEMENTATION AGREEMENT WITH THE LOCAL COMMUNITY-BASED ORGANIZATIONS (CBOS).

## AMMAN GREEN CITY ACTION PLAN (GCAP)

THE PROJECT OBJECTIVE IS TO SUPPORT GREATER AMMAN MUNICIPALITY IN ORDER TO IMPROVE ITS SUSTAINABILITY PERFORMANCE BY IMPLEMENTING THE GREEN CITIES ACTION PLAN METHODOLOGY TO IDENTIFY PRIORITY AREAS WHERE TANGIBLE PROJECTS CAN BE IMPLEMENTED, AND DEVELOPING A COMPREHENSIVE AND SYSTEMATIC CITY-WIDE STRATEGY THAT ADDRESSES A RANGE OF ENVIRONMENTAL ISSUES AND HIGHLIGHTS THE LINKS WITH ECONOMIC AND SOCIAL OUTCOMES. MOSTAQBAL MANAGED THE PROJECT BESIDE DELIVERING ENGINEERING SERVICES RELATED TO THE ENVIRONMENT, SOCIAL, URBAN PLANNING, LEGAL, AND PREPARING TECHNICAL ASSESSMENT CHAPTERS OF DIFFERENT DISCIPLINES.





# WATER & WASTEWATER

Managing environmental resources effectively has never been more essential, and water is no exception. We offer a diverse range of services in the field of water and wastewater, covering water networks, treatment plants, and sewage system design, dams, culverts, flood studies, and groundwater modelling. Our work on the Wadi Esal Dam is one of several major projects that we are proud to have designed in line with the highest international standards - our extensive track-record has rightfully recognizes us as experts in water and wastewater industry.



## WADI ESAL DAM

WADI ESAL IS LOCATED 3 KM NORTH WADI NUMAYRA IN JORDAN THE PROJECT OBJECTIVE IS TO PROVIDE WATER FOR IRRIGATION AND INDUSTRIAL PURPOSES, PLUS FLOOD PROTECTION, RECHARGE, AREA DEVELOPMENT AND ENVIRONMENTAL RESTORATION. MOSTAQBAL PREPARED TECHNICAL, ECONOMIC, ENVIRONMENTAL, FINANCIAL FEASIBILITY STUDIES AND PRELIMINARY DESIGN REPORT WHICH AIMS TO PROVIDE JORDAN VALLEY AUTHORITY WITH ENVIRONMENTAL, TOPOGRAPHICAL, HYDROLOGICAL AND GEOTECHNICAL STUDIES. ALONG WITH THE FINAL DESIGN AND TENDER DOCUMENTS.



## LIWA AL-TAIBEH WASTE WATER PROJECT

THE PROJECT AIMS AT SERVING THE NEEDS OF LIWA AL-TAIBEH AREAS THROUGH COLLECTION, TREATMENT & EFFLUENT REUSE, UP TO THE YEAR 2040. THE PROJECT CONSISTS OF GRP AND HDPE NETWORKS OF 200 KM LENGTH, IN ADDITION TO 6 LIFTING STATIONS AND A WASTEWATER TREATMENT PLANT (WWTP) AND THE TRANSMISSION LINE. MOSTAQBAL PREPARED THE STUDIES, DESIGNS EIA AND TENDER DOCUMENTS FOR ALL PROJECT COMPONENTS.



## BAQA'A SEWAGE TREATMENT PLANT

THE PROJECT OBJECTIVE IS TO UPGRADE AND EXPAND THE WASTEWATER TREATMENT PLANT AT BAQA'A AND ABU-NUSAIR AREAS, MOSTAQBAL REVIEWED THE DESIGN AND CONDUCT A SOIL SURVEYS BESIDE FOUNDATION INVESTIGATIONS. AND SUPERVISED THE PROJECT CONSTRUCTION.



## SARAYA AQABA INFRASTRUCTURE AND WATER LAGOON PROJECT

A LUXURIOUS 617000 M<sup>2</sup> MASTER PLANNED DEVELOPMENT COST AROUND 1 BILLION USD THE DEVELOPMENT INCLUDE PREMIUM HOTELS, LUXURY RESIDENTIAL UNITS AND VILLAS, RETAIL SHOPS, RESTAURANTS, SPORTS COMPLEX, BEACH CLUB, AMPHITHEATER, CONVENTIONAL CENTER, WATER PARK, AND A MANMADE LAGOON ADDING 1.5 KM TO THE SEA SHORE, MOSTAQBAL DELIVERED A CONSTRUCTION SUPERVISION TO MAJOR PHASES OF THE PROJECT.



## JEDDAH WASTEWATER MONITORING PROJECT - (KSA)

MOSTAQBAL DESIGNED A MONITORING SYSTEM FOR THE WASTEWATER COLLECTION NETWORK OF JEDDAH, KSA. THE SYSTEM ALLOWS CONTINUOUS MONITORING OF THE NETWORK FOR WASTEWATER LEVELS AND THE PRESENCE OF IDENTIFIED POLLUTANTS DISCHARGED INTO THE NETWORK. THIS SYSTEM ALLOWS WARNING OF SUBSTANCES WHICH MAY AFFECT THE OPERATION OF THE WASTEWATER TREATMENT PLANTS ENTERING THE NETWORK AND LOCALIZE THE PROBABLE SOURCE OF THE POLLUTANT. ALSO A SECONDARY SAMPLING SYSTEM TO IDENTIFY THE EXACT SOURCE OF THE POLLUTION FOR FURTHER ACTION TO PREVENT RECURRENCE.



## ADAPTATION TO CLIMATE CHANGES IN JORDAN VALLEY

THE REHABILITATION WORKS COMPRISED OF CONSTRUCTION SUPERVISION TO THE IRRIGATION SYSTEM IN THE ADAPTATION TO CLIMATE CHANGE IN THE JORDAN VALLEY INCLUDING SEVERAL MAJOR COMPONENTS OF THE PROJECT. THE INFRASTRUCTURE CHANGE WILL ALLOW THE USE OF RECLAIMED WATER EFFICIENTLY AND EFFECTIVELY IN THE NORTHERN AND MIDDLE JORDAN VALLEY.



## AJLUN WATER NETWORK

MOSTAQBAL SUPERVISED THE CONSTRUCTION OF WATER TANKS, REHABILITATION OF THE EXISTING WATER NETWORK INCLUDING MAIN PIPELINES, SUB PIPELINES, VALVES AND HOUSEHOLD CONNECTIONS.



## NEW RESIDENTIAL DISTRICTS/ CENTRAL NORTHERN AREA JORDAN

MOSTAQBAL CONDUCTED THE CONSTRUCTION SUPERVISION OF INFRASTRUCTURE WORKS FOR THE NEW CENTRAL NORTHERN RESIDENTIAL DISTRICT SITE AT AQABA, WHICH COVERS A PLOT AREA OF APPROXIMATELY 274 000 M<sup>2</sup>, AND CONNECTING THE SITE INFRASTRUCTURE WITH THE EXISTING SURROUNDING NETWORKS.



## WASTEWATER NETWORK IN GREATER AMMAN AREAS

MOSTAQBAL DESIGNED THE WASTEWATER NETWORKS AND THE HOUSEHOLD CONNECTIONS IN DIFFERENT AREAS IN GREATER AMMAN WITH A TOTAL LENGTH OF 150 KM IN ADDITION TO THE MAIN SEWER CONVEYOR PIPELINE WITH A TOTAL LENGTH OF 8 KM AND DIFFERENT SIZED MANHOLES.

## ZARQA GOVERNORATE WATER SYSTEM RESTRUCTURING AND REHABILITATION

MOSTAQBAL FULFILLED FEASIBILITY STUDY, ESIA, WATER NETWORKS DESIGN USING THE GIS TECHNOLOGY FOR THE PROJECT TO REDUCE WATER LOSS AND SUPPLY 600,000 INHABITANTS IN ZARQA GOVERNORATE.



# TRANSPORTATION & ROADS

At MOSTAQBAL, we have long experience in delivering transportation projects across Jordan. Our design team is equipped to prepare specialized engineering solutions, whether hydrological, axle loads, pavement layer design, intersections, both at-grade and not-at-grade. We have expertise in a range of projects, from the expansion and rehabilitation of Madaba's King's Road to the construction supervision of the Bus Rapid Transit (BRT) network connecting Amman to Zarqa. Whether it's a highway renovation or a port redevelopment, preserving the health of our transport networks is vital for growing our economy, and keeping our communities connected.



## BUS RAPID TRANSIT (BRT)

MOSTAQBAL SUPERVISED THE CONSTRUCTION OF BUS RAPID TRANSIT TRACK WHICH CONNECT AMMAN AND ZARQA CITIES, INCLUDING THE IMPLEMENTATION OF THE 3.5 KM BUS ROUTE, AS A MIDDLE 2-WAY LANE, STARTING FROM AL-MAHATTA AREA TO THE AIN GHAZAL INTERSECTION, AND EXPANDING THE EXISTING ROAD (ADJACENT TO BRT ROUTE) TO 3 LANES FOR EACH DIRECTION.



## AL MOLOOKY ROAD

MOSTAQBAL SUPERVISED THE CONSTRUCTION OF EXPANSION 8 KM LONG ROAD IN TAFILEH WHICH CONNECTS PRINCE ZAID HOSPITAL AND AIN ALBAIDA. THE EARTH WORKS INCLUDED EXCAVATION AND BACKFILLING IN COMPLIANCE TO THE ROAD'S DESIGN PROFILE AND NATURAL GROUND ELEVATIONS, ASPHALT WORKS, SIDEWALKS, STREET LIGHTING, BARRIERS, BOX CULVERTS, PIPE CULVERTS, WHITE AND YELLOW PAINTING WORKS AND TRAFFIC SIGNS.



## AQABA NEW PORT

THE NEW PORT OF AQABA IS ONE OF JORDAN'S NATIONAL INFRASTRUCTURE PRIORITIES AND WILL CONSTITUTE A MAJOR ELEMENT OF THE COUNTRY'S LONG-TERM ECONOMIC GROWTH, AS IT IS PART OF ITS SOLE MARITIME GATEWAY AND A KEY COMPONENT OF ASEZ'S EMERGING POSITIONING AS A LEADING MULTI-MODEL LOGISTICAL TRADE GATEWAY FOR THE LEVANT REGION ON THE RED SEA. THE NEW PORT COVERS AN AREA OF APPROXIMATELY 600 000 M<sup>2</sup> PROVIDING EXTENSION AND EXPANSION OF WORKS INCLUDING: REVIEWING AND VERIFYING OF THE EXISTING MARINE WORKS DESIGN BESIDE PREPARATION OF THE EPC TENDER DOCUMENTS.



## HASA TAFILEH ROAD

MOSTAQBAL DELIVERED CONSTRUCTION SUPERVISION TO THE ROAD WITH A LENGTH OF 11 KM IN ADDITION TO THE ROAD SHOULDERS WITH A WIDTH OF 3 M FROM EACH SIDE, AS WELL AS THE EXTENSION TO THE EXISTING BRIDGE INCLUDING STORM WATER DRAINAGE AND PAVING LAYERS. WORKS ALSO INCLUDED THE PREPARATION OF STUDIES, DESIGNS, TENDER DOCUMENTS, AND SOIL TESTS.



## AMMAN IRBID ROAD

MOSTAQBAL SUPERVISED THE ROUTINE AND PERIODIC MAINTENANCE WORKS IN ACCORDANCE WITH THE BEST PRACTICES IN THE WORKPLACE AND ASPECTS OF QUALITY ASSURANCE. ENSURING PREVENTIVE AND EMERGENCY MAINTENANCE WORKS TO THE ROAD STARTING FROM SWEILEH BRIDGE TO RAMTHA INTERSECTION INCLUDING SEVERAL BRIDGES ON THE WAY.



## NAOUR MADABA HOUSBAN ROAD

MOSTAQBAL SUPERVISED THE CONSTRUCTION OF 16 KM 4-LANE ROAD (7.9 M EACH) NAOUR -HUSBAN - MADABA DUAL CARRIAGEWAY, CONNECTING AMMAN, DEAD SEA, AND MADABA. THE ROAD HAS A CENTRAL MEDIAN AND MANY INTERSECTIONS SERVING RESIDENTIAL AREAS. ALL THE WORKS COMPLY WITH ROAD'S DESIGN PROFILE AND NATURAL CONTOURS/ELEVATION.



## NORTH RUNWAY /QUEEN ALIA INTERNATIONAL AIRPORT

MOSTAQBAL SUPERVISED THE REHABILITATION WORKS OF NORTH RUNWAY AND TAXIWAY AT QUEEN ALIA INTERNATIONAL AIRPORT (QAIA) IN ADDITION TO THE SUPERVISION OF THE GENERAL SAFETY WORKS AT THE PROJECT SITE, INCLUDING CIVIL AND ELECTRICAL WORKS.



## ZARQA YAJOUZ ROAD

MOSTAQBAL SUPERVISED THE CONSTRUCTION AND REHABILITATION OF THE 2.3 KM-LENGTH AL-ZARQA-YAJOUZ ROAD, CONSISTING OF FOUR-LANE SEPARATED BY A MEDIAN ISLAND. IN ACCORDANCE WITH WORKPLACE BEST PRACTICES AND QUALITY ASSURANCE, PARTICULAR CONSIDERATION WAS GIVEN TO THE SPECIFICS OF THE PROJECT SITE AS A TRAFFIC-HEAVY AREA.



## QUEEN ALIA INTERNATIONAL AIRPORT CARGO ROAD

THE SCOPE OF WORK FOR THIS PROJECT COMPRISED SUPERVISING THE CONSTRUCTION OF A TWO-LANE, 5.2 KM LONG CARGO ROAD WITH A 3 METERS WIDE SHOULDER PER LANE. THE WORK INCLUDED EARTHWORKS (INCLUDING EXCAVATION AND BACKFILLING IN ACCORDANCE WITH ROAD-DESIGN PROFILES AND NATURAL CONTOURS/ELEVATION), PAVEMENT MIX, BASE AND SUB-BASE COURSING, PLACING TRAFFIC SIGNALS, PAINTING ROAD MARKINGS, AND STORM WATER DRAINAGE. PARTICULAR CONSIDERATION WAS GIVEN TO THE SPECIFICS OF THE PROJECT SITE AS A TRAFFIC-HEAVY AREA.

## KING'S ROAD - (MADABA)

MOSTAQBAL SUPERVISED THE CONSTRUCTION OF 6 KM TOTAL LENGTH EXPANSION AND REHABILITATION OF MAJOR ROAD SECTIONS. WORKS INCLUDED THE REMOVAL OF BARRIERS, ASPHALT WORKS, BOX AND PIPE CULVERTS, EARTHWORKS, COATING, AND DRAINAGE.



## ENERGY & POWER

Recently, we've created a specialized power unit to advance our capabilities in electrical power and energy. This unit is comprised of the most experienced consultants across a range of power industries, and is focused on satisfying the needs of both local and regional markets. We draw on a history of excellence in designing and supervising several major nuclear and renewable energy projects in Jordan, including the site characterization for Jordan's first nuclear power plant, and the 200 MegaWatt MASDAR solar power plant.

### MASDAR SOLAR PHOTOVOLTAIC POWER PLANT 200 MWP

A MEGANTIC PHOTOVOLTAIC SOLAR POWER PROJECT WITH A PEAK POWER OF 200 MWP ON A PLOT OF 7000 000 M<sup>2</sup> AT MUWAQQAR DISTRICT, GENERATED POWER WILL BE TRANSMITTED TO THE NATIONAL ELECTRIC POWER COMPANY (NEPCO) GRID, THE "OFF-TAKER", VIA A NEW 10 KM TRANSMISSION LINE. THE PLANT WILL GENERATE 563.3 GIGAWATT-HOURS (GWH) OF ELECTRICITY EACH YEAR, SUPPLYING THE ANNUAL POWER NEEDS FOR 160,000 HOMES, COMPENSATE THE NEED TO 1.4 BILLION LITERS OF IMPORTED RAW OIL, AND DISPLACING AN ESTIMATE OF 360,000 TONS OF CO<sub>2</sub> EACH YEAR, AND EQUIVALENT TO 3% OF THE ANNUAL ENERGY CONSUMPTION OF JORDAN. MOSTAQBAL SUPERVISED THE CONSTRUCTION WORKS.



### SHAMS MAAN SOLAR PLANT 57 MW

A 57-MW PHOTOVOLTAIC (PV) POWER PLANT WITHIN MA'AN DEVELOPMENT AREA (MDA) INDUSTRIAL PARK. THE PROPOSED PROJECT IS CONSIDERED AS ONE OF THE REGION'S LARGEST PHOTOVOLTAIC (PV) SOLAR POWER PLANTS THAT WILL COVER AN APPROXIMATE AREA OF 2000 000 M<sup>2</sup>. THE PROJECT AIMS TO UTILIZE APPROXIMATELY 600,000 PV PANELS AND PRODUCE AROUND 162 GWH PER YEAR. MOSTAQBAL DELIVERED STRUCTURAL & ELECTRICAL DESIGN BESIDE THE CONSTRUCTION SUPERVISION.



### JORDAN RESEARCH AND TRAINING REACTOR (JRTR)

THE PROJECT IS LOCATED WITHIN JORDAN UNIVERSITY FOR SCIENCE AND TECHNOLOGY (JUST) AND INTENDED TO SERVE THE NEEDS OF NUCLEAR ENGINEERS AND SCIENTISTS IN JORDAN, AND PROVIDE IRRADIATION SERVICES IN SUPPORT OF THE JORDANIAN INDUSTRIAL, AGRICULTURAL AND MEDICAL INFRASTRUCTURE. A TOTAL OF 25,400 M<sup>3</sup> OF NORMAL, HEAVY AND GROUT CONCRETE WERE USED TO CONSTRUCT THE JRTR PROJECT'S CIVIL WORKS INCLUDING THE REACTOR COMPONENTS, TANKS AND SUPPORT BUILDINGS. MOSTAQBAL REVIEWED THE DESIGN AND SUPERVISED THE CONSTRUCTION OF THE PROJECT.



### THE FIRST NUCLEAR POWER PLANT IN JORDAN

MOSTAQBAL CONDUCTED THE EVALUATION OF SITE BACKGROUND RADIOACTIVITY TO ESTABLISH BASELINE ASSESSMENT OF THE RADIOACTIVITY LEVEL. THE OUTCOME OF THIS STUDY IS PART OF THE SITE PERMIT APPLICATION. THE SAMPLING PROGRAM FOR THE RADIOLOGICAL BACKGROUND STUDY IS DESIGNED TO MEASURE THE VARIOUS ENVIRONMENTAL COMPONENTS (AIR, SOIL, WATER, SEDIMENTATION AND AMBIENT DOSE RATE) AS WELL AS FOR ORGANIC COMPONENTS (MILK, MEAT AND GRASS) WHERE AVAILABLE. IT AIMS TO COLLECT REPRESENTATIVE SAMPLES FROM REQUIRED STRATEGIC LOCATIONS NOTING THAT THE SURVEY AREA COVERED 15 KM RADIUS FROM THE CENTRE OF THE PROPOSED NPP SITE.



### MA'AN SOLAR PARK

MOSTAQBAL DESIGNED CABLES ROUTING FOR THE MA'AN SOLAR PARK, STARTING FROM THE INVESTORS' SUBSTATION TO THE MAIN SUBSTATION (NEPCO'S) ALONG WITH RELEVANT AUTHORITIES FOLLOW UP AND APPROVALS.



### MA'AN PHOTOVOLTAIC POWER PLANT

MOSTAQBAL IMPLEMENTED MASTER PLAN STUDY, HYDROLOGICAL STUDY, FULL DESIGN OF INFRASTRUCTURE WORKS INCLUDING ROADS, CULVERTS, WATER, FIREFIGHTING NETWORKS, STREET LIGHTING, SECURITY, TELECOMMUNICATIONS, AND CCTV TO THE TREMENDOUS 5,000,000 M<sup>2</sup> PHOTOVOLTAIC FIELDS PROJECT AREA



### ORANGE PV PROJECT

MOSTAQBAL DELIVERED CONSULTANCY AND TENDERING SERVICES TO A SOLAR PHOTOVOLTAIC PLANT OF 34 MW CAPACITY PROJECT TO MEET THE ELECTRICITY CONSUMPTION NEEDS OF ORANGE UNDER ELECTRICITY WHEELING REGULATIONS. THREE SOLAR PV PLANTS ARE REQUIRED UNDER AN EPC APPROACH.



### ANAEROBIC DIGESTION PLANT

THE PROPOSED ANAEROBIC DIGESTION PLANT (AD TECHNOLOGY PLANT) IS EXPECTED TO GENERATE BETWEEN 11 AND 12 MILLION CUBIC METERS OF BIOGAS PER YEAR, WHICH SHOULD BE SUFFICIENT TO RUN 3X1MW ENGINES AND EXPORT UP TO 24,000 MWH OF ELECTRICITY TO THE GRID PER YEAR. MOSTAQBAL CONDUCTED PRE-FEASIBILITY FINANCIAL AND ENVIRONMENTAL STUDY INCLUDING SITE SELECTION CRITERIA AND ALTERNATIVES, ENVIRONMENTAL IMPACTS AND MITIGATION MEASURES, REGULATORY AND INSTITUTIONAL ISSUES, PROJECT COST AND COST ANALYSIS, PROJECT TIME PLAN AND EXECUTION PHASING.



### KING HUSSEIN CANCER CENTRE SOLAR PV PLANT

A 25-MW SOLAR PV PLANT PROJECT EMBARKED BY KING HUSSEIN CANCER FOUNDATION (KHCF) AND KING HUSSEIN CANCER CENTER (KHCC) TO COVER THE ELECTRICITY CONSUMPTION NEEDS OF KHCC UNDER ELECTRICITY WHEELING REGULATIONS. THE PROJECT IS EXECUTED UNDER DESIGN-BUILD-OPERATE (DBO) CONTRACT MOSTAQBAL DELIVERED PROJECT MANAGEMENT AND ENGINEERING CONSULTING SERVICES TO THE CLIENT.



### ZA'TARI PV POWER PLANT

THE LARGEST SOLAR PLANT EVER BUILT IN A REFUGEE CAMP, PROVIDING CLEAN AND MUCH-NEEDED ADDITIONAL POWER TO 80,000 SYRIAN REFUGEES LIVING IN THE CAMP. THE PV PLANT WITH CAPACITY OF 12.9 MWp, WHICH INCREASES THE ELECTRICITY SUPPLY TO REFUGEES' HOMES FROM 8 HOURS UP TO 14 HOURS A DAY. IN ADDITION THE SOLAR PLANT WILL DELIVER HIGH ANNUAL COST SAVINGS OF US\$5.5 MILLION, WHICH UNHCR PLANS TO REINVEST IN VITAL HUMANITARIAN ASSISTANCE PROJECTS. THE PV PLANT ON THE OUTSKIRTS OF THE UN CAMP ZA'ATARI CONSISTS OF 40,000 PHOTOVOLTAIC PANELS ARRANGED IN ROWS HUNDREDS OF METERS LONG COVERING 248,000 M<sup>2</sup> AREA. THE SOLAR PLANT IS CONNECTED TO JORDAN'S NATIONAL GRID, MEANING ANY UNUSED POWER IS FED BACK INTO THE NETWORK TO SUPPORT THE ENERGY NEEDS OF THE LOCAL COMMUNITY AND HELP THE COUNTRY MEETS ITS RENEWABLE ENERGY GOALS. MOSTAQBAL REVIEWED AND MODIFIED THE: HYDROLOGICAL STUDY, ROADS AND SURFACE DRAINAGE DESIGN, DESIGN THE CONTROL BUILDING AND SWITCH GEAR ROOM, OBTAINING BUILDING PERMITS, DESIGN OF THE FOUNDATIONS ASSOCIATED WITH THE PV POWER PLANT.





📍 6th Floor Park Plaza Complex  
Salah Sehemat St. - Sweifieh

📍 2084 Amman 11821 Jordan

☎ +962 6 5923 602 / +962 6 5663 611

📠 +962 6 5923 601 / +962 6 5606 744

✉ [info@mostaqbal.jo](mailto:info@mostaqbal.jo)

🌐 [www.mostaqbal.jo](http://www.mostaqbal.jo)